

Your *Country* Neighbor

Free

October 2017

Auburn • Brownville • Cook • Falls City • Hiawatha • Johnson • Nebraska City • Peru • Rock Port • Sabetha • Syracuse • Tecumseh

**A Magazine for Small Towns
and Rural America**



More PSC Bobcat Photos pages 6 & 9



Lourdes Central was one of the many bands that helped make this Applejack Parade one of the best!

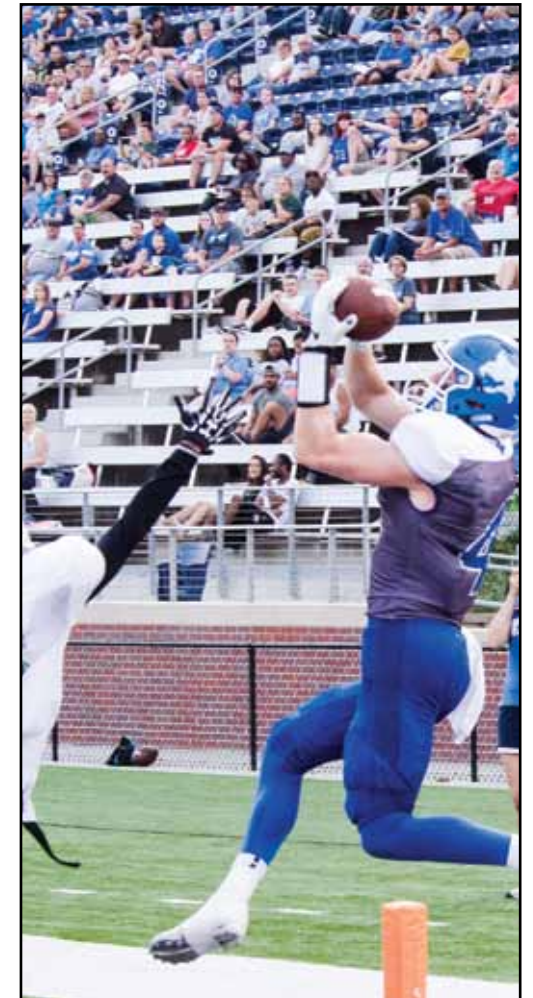
Your Country Neighbor

*Voices and Views From the
Valleys of the Nemaha*

Publisher & Photographer, Stephen Hassler

Contents

<i>"Guitar Poems"</i> by Steve Adams.....	2
Walt's "Thoughts of an Old Man".....	2
New to Medicare? Free Class!.....	2
"What's left after the lights go out?".....	4
Devon's Poetry.....	5
Merri's "Diary of a Part-time Housewife".....	8
More Bobcat Photos.....	6,9
Applejack Parade Photos.....	10
<i>"Alzheimer's Affects Us All"</i>	11
PSC Football Schedule.....	12
VALENTINO'S COUPON!	12



Pass reception for TD, 09/02/2017, PSC v Central Methodist W 40-20

October 2017

Guitar Poems

Steve Adams



Train comes through
It's a little after ten
Be tomorrow morning
before it's back again
Things move fast and then
they slow back down
Hear that whistle blowing as
it's leaving town

It's easy to see at night
from the top of the hill
Stars are bright
fog rises from the fields
winds are calm
October nights chill
Listen closely-you can
hear the whistle still

It echoes down the valley and
out onto the plain
There's just something about a whistle
And a danged ole train

As a young man
I stood out on that hill
Wish I could be standing there still

It echoes down the valley and out onto the plain
There's just something about a whistle
And a danged ole train

"Welcome to Medicare" Class

Mary Ann Holland

If you are "new to Medicare" or planning to enroll in Medicare in the near future, you will want to take advantage of the opportunity to gain a better understanding of Medicare benefits, plus identify how and when to enroll. This class is also open to family members or caregivers of those new to Medicare.

The Nebraska Senior Health Insurance Information Program [SHIIP] of the Department of Insurance will offer a Welcome to Medicare class on **Tuesday, October 10, 2017, at the Nebraska City Learning Center located at 819 Central Avenue, Nebraska City.** The class is being offered by Southeast Community College. This non-credit class will be held from 6:00 to 8:00 p.m. Tuition is being provided by the Nebraska SHIIP.

While tuition is provided, it is still necessary to pre-register for this class. To register, please visit www.doi.ne.gov/shiip, or call 1-800-234-7119.

October Writers

Devon Adams
Steve Adams
Stephen Hassler
Mary Ann Holland
Merri Johnson
Lee Nyberg
Walt Wenzl

Thank You!

Copyright 2017, by *Your Country Neighbor*. All rights are reserved. No part of this publication may be reproduced in any form or by any method without the written permission of the publisher. Ownership of some photos and/or articles is retained by the author.

Your Country Neighbor
P.O. Box 126
Peru, Nebraska 68421

countryneighbor@windstream.net

View Online Version at
www.yourcountryneighbor.com

Thoughts of an Old Man

Walt Wenzl

Once upon a time
When I was old and grey
I would walk using a cane

If I couldn't walk
I'd sit a spell
And tell the world to go to _ _ _ _

While sitting a spell
I would ponder
And know the Lord is still up yonder

Now from this time on I'll sing a song
And praise the Lord all day long
He's my leader and my guide
So by his laws I will abide
And when I die I want to be
In his heavenly company



Mainstreet
BANK
themainstreet.bank

Cook Louisville Peru Syracuse Tecumseh Virginia Wymore
Member FDIC

SEE ME FOR YOUR INSURANCE AND FINANCIAL REVIEW.

Together we'll prioritize your needs and help you plan your financial future. Schedule your free review today.

WE LIVE WHERE YOU LIVE.®



Patrick Castle Ins Agcy Inc
Pat Castle, Agent
Auburn, NE 68305
Bus: 402-274-5121



LIKE A GOOD NEIGHBOR,
STATE FARM IS THERE.®

Providing Insurance and Financial Services

Consult your tax or legal advisor for specific advice.
State Farm • Home Offices: Bloomington, IL
P036333 10/03

TINCHER OF AUBURN

sales and service



COMPLETE AUTO SERVICE AND REPAIR ALL MAKES AND MODELS

**Heavy Engine Repair
Alignments
Exhaust Repair
Brake Work
Light Engine Repair**



\$8950

2009 Dodge Journey RT AWD



Call Us

2010 Ford Escape XLT



\$5800

2006 Chrysler Town & Country



\$8900

2011 Chev Equinox



Call Us

2011 Chevy Uplander LS



\$3250

2000 Ford Windstar LX - Low Miles!



Call Us

2001 Ford Taurus SES



Call Us

2011 Toyota Venza - Low Miles



Call Us

2015 Mazda CX5 Sport

814 Central Ave. Auburn, Nebraska 68305
Call 402-274-2277 Visit www.TincherAutoSales.com



Most of these are gone by October.

Vultures migrating,

What's left after the lights go out?

Stephen Hassler

I've been thinking about storms lately with all the hurricanes in the news. Thunderstorms are common in these central states, and my electricity 'goes out' at least once a Summer. Ice in Winter can produce the same result. The inconvenience of having fewer options when it comes to meal preparation, air conditioning, TV, internet, and illumination, motivates me to focus on what's available, such as candles, card games, and conversation.

During a category 4 or 5 hurricane I can't imagine anyone sitting around playing cards. I would be planning how to find cover for when the roof blows off. But if there is no eminent threat to life...

How does one pass the time during an electrical storm? What I do gives me some insight into what's important; those things I don't give much attention to, or perhaps I'm not aware of, during the normal hum-drum of pleasant weather.

Although it's seldom that I find the time to read a book these days, I do try to have a good one "on hand" for when there's nothing else I can do. I've read a book by the light of my battery-powered computer screen until the lights came back on, but sometimes I just go to bed early. My mother never would have done that; she would have kept busy pacing and praying, unless we were in the potato cellar. I can imagine families sitting around in the candlelight playing cards or monopoly or just talking... or praying.

These things might not be the most important things in life, but in the darkness I become aware of what I can live without and what or who I want near to me. Another result is to have more appreciation for the options I have when the lights are on.

So when rain and lightning keeps me indoors, I find what's in the refrigerator, and put together a snack. I find a good book and read by lantern or laptop screen. But this is just to pass the time until the world powers up again.



Whiskey Run Creek Winery

Whiskey Run Creek

VINEYARD & WINERY

October Wine-Tasting Hours:

Wed & Thu 10:00 am - 5:00 pm

Fri & Sat 10:00 am - 6:00 pm

Sun 1:00 pm to 5:00 pm

Closed Mondays and Tuesdays

**Try our new
CHERRY WINE!**

**Visit us in Brownville October 14th, during
*The STEAMBOAT TRACE FESTIVAL!***

**Or October 14th & 15th during
*OLD TIME AUTUMN Weekend***

Farmers Market, Artists, Carriage & Trolley Rides

Join us in a special wine-tasting experience!

402-825-4601

www.whiskeyruncreek.com

702 Main Street

Brownville, Nebraska 68321



2220 J Street • Auburn, Nebraska 68305

**MEDICARE PART D
OPEN ENROLLMENT**

October 15 to December 7

**Stop by and ask us to help you
review plans for 2018.**

Flu Shots Available Now!

**No Appointment Needed
Zero copay with most
Insurance plans**

Hours: Mon-Fri 8:30-5:30, Sat 8:30-1:00

www.Stores.Healthmart/CodysUsavePharmacy

(402) 274-4186 or (800) 628-6394



Poetry by Devon Adams

GAMBLERS

The fields are full of corn and beans and in all the green miles and the gravel roads, there is not a casino to be seen. But the gamble is always there, in the spring and in the seeds, and in the summer of the sun, rain, wind and hail and drought. No amount of hope has any weight in the calculation of a crop, because reality is cold and sharp and measured in the income colors of red and black. It takes the courage of a soldier going into battle for a farmer to invest his heart and soul and sweat in labor that is a bet he may lose, or he may win. And here is the difference between winning and losing: in his heart he is winning simply because he loves what he does.

SAPPHIRES AND VELVET

Like the endless depth of a sapphire, or a lush velvet robe, the October blue of the sky vibrates with color. No more of the washed denim of a broiling summer afternoon, when humidity is a thick vapor hanging over your head like a wet sheet. Now the air is crisp and your mind has the edge of a sharp knife. Flaming leaves dance against the blue in a flagrant display of arrogance soon to be dulled by a killing frost. It is the time to grasp all the treasured days and enjoy their richness. Winter will bring it's own jewels, with snow sparkles flashing like diamonds on the lush ermine snow coats thrown carelessly across the fields.

OLD TRACKS


There is a bend by the river, where the limestone cliff is high and the shadows are deep. Swift currents call out names from long ago, of folks who traveled that way sailing on the water, or riding on the train whose tracks lived long after the last engine died. The tracks lay there for years, rusting, and bending with the freeze and thaw of the soil and the seasons. It was a rough walk for wild critters who chose to take the train path that was level, instead of weaving up and down the bluffs through heavy brush. The massive timbers that held the line of tracks together were like level steps, and instead of navigating stairs, critters had to step over, or step on, each railroad tie on a journey that followed the river for miles. People from the town loved to wander out that way because it was a unique kind of adventure. Then, after years of memories, the tracks were gone. Now there is a nature trail that is a pleasure, so that your eyes can gaze at scenery instead of where your feet are walking.

PENCIL PORTRAITS: PEOPLE & ANIMALS
Done from your photographs.

Send to:
Devon Adams
P.O. Box 192
Peru, NE 68421
OR
buckskinz@windstream.net

8x10 (mat size)	\$25.00
11x14 (mat size)	\$35.00
16x20 (mat size)	\$55.00

Phone: 402-209-9377
Web Site: BuckSkins.com



RIVER GHOSTS

On the chilly end of a flaming month, bare trees shiver in a cold river fog. Hill tops rise to meet the sun, but the talking water is hidden, with only a voice to say it is there. Silent eagles perch high in an ancient cottonwood tree, waiting for light to find the fish near the sandbar. All the creatures are hidden in the mist. Movements are muffled. Predator and prey wait in the dead calm air, ready to flee or to pounce. They are a band of gray ghosts haunting each other.

GROWING UP?

Gazing into the past can warp your present into amazingly complex thoughts that change the way you see today. As children we have no power to change the condition of our family. We are trapped in a situation made by our parents, and only our feelings belong to us, but they can be hidden, even from ourselves. Fear may be wearing the mask of anger, or we can be spoiled to the point of demanding what we want and then getting it, even though it probably isn't what we need. As our bodies grow we often stay the same inside, and facing life becomes a problem. Envy may come to mind as others seem to have more, or be happier. Or, you think that only if you had just one more object that you covet, it might stop the ache. Maybe nothing is ever your fault, so you are always on the offensive, blaming and shaming and making enemies. Who was that child so long ago, and who are you today?

STUTHEIT IMPLEMENT COMPANY



(S) Syracuse, NE on Highway 50
800-374-4630 or 402-269-2241

(A) Auburn, NE on Highway 75
800-456-9916 or 402-274-4941

**Large Enough To Accommodate You,
Small Enough To Appreciate You.**



www.stutheitimpl.com



Visit us in Auburn or Syracuse and check out our lineup of Deere equipment for all your harvesting requirements.

- (A) '13 JD Z645, 48" deck, 401 hrs.....\$2900
- (A) '14 JD Z445, 54" deck, 186 hrs.....\$2950
- (A) '07 JD Z225, 42" deck, 270 hrs.....\$1500
- (S) '10 JD X360, 48" deck, 200 hrs, pwr steering & lift.....\$3200
- (A) '12 JD X534, 54" deck, 540 hrs.....\$3950
- (S) '10 JD 825 Gator, 720 hrs, alloy wheels, pwr dump, brush guard.....\$11,500
- (S) '07 JD X720, 436 hrs, 54" deck, 25 hp Kawasaki, no rips in seat.\$5600
- (A) '01 Exmark M7613KC, low hr, 36" deck, 13 hp Kohler, Comm. walk behind.....\$1000
- (S) 09 Dixon Speed ZTR 44, 22 hp Briggs, 44" deck.....\$1950
- (A) '83 JD 4450, 7326 hrs, QR Trans, 3 SCV'S, 2WD, TA26 Westendorf loader...\$28,500
- (S) '13 JD 825i Gator, 140 hrs, camo, alloy wheels, roof, bucket seats.....\$13,200
- (S) '12 JD 568 Round Baler, twine, wrap, hyd, Megawide pick up.....\$26,900
- (S) Frontier 8 ft 3 pt blade.....\$800
- (S) '14 JD 5115M, 3 function, 16F/16R PR, 3 SCV, 154 hrs.....\$62,000
- (S) '16 Schaben 60 gal utility sprayer, 10 ft booms.....\$720

John Deere - Honda - Toro Mowers in Inventory



TD 09/02/2017, PSC v Central Methodist W 40-20



Pass reception, 09/02/2017, PSC v Central Methodist W 40-20

NEW CONSTRUCTION -- PRICE REDUCED!



1916 6th Street \$235,000

3 bedroom 2 1/2 bath, open floor plan home in a beautiful setting. Kitchen, walk-in pantry, bar seating, breakfast nook. Master suite with full bath and walk-in closet. Main floor laundry, and full main bath. Living room access to approx. 14x19 deck. Full walkout basement.

Whether it's buying, selling, renting, or looking for a place to build, let

The American Dream Real Estate Company

be your first choice.

402-274-4410

Andrea Mellage, Associate Broker..274-8557
Carla Mason, Broker274-1817



Approximately 13 ACRES



63600 712 Rd, Humboldt \$125,000
4-bed, 2 3/4-bath, walkout bsmt, great view, det. 2-car garage.



73131 641 Ave. \$525,000
Approx. 80 acres. 3-bed, 2 1/2 bath full walkout basement, 2-car attach. garage.



1217 16th Street \$69,500
2-bed, 1 3/4 bath, spacious living & dining rooms, main floor laundry.



1008 P Street \$58,000
Nice 3 bed/2 bath ranch, finished basement, and fenced back yard.



1520 22nd Street \$107,500
New roof 2007, 1-car heated garage



520 J St. \$190,000
55,000+ sq feet of Commercial Property
Approx 219 linear ft of Hwy 75 Frontage.



820 Central Avenue

Auburn, Nebraska 68305

www.americandreamrealestatecompany.com



Valley View Apartments
(High Rise) • 1017 H Street • Auburn, NE

Carefree Living!

**Low Income
One Bedroom Apartment
Beautiful View**

**No More Snow Shoveling
No More Lawn Mowing**

- Utilities Paid
- Appliances Furnished
- Building Security
- Laundry Facility
- Assigned Parking
- Activity Room & Library



Office Hours: Mon-Fri. 9:00 to 4:00

(402) 274-4525



Old Time Autumn, Brownville

Saturday, October 14th, 2017

- 9:00-4:00 • Farmer's Market & Artists on Main Street
- 10:45 AM • *Heritage Tree* Presentation w/Sen. Watermeier
- 11:30-1:00 • Chicken & Biscuit Luncheon - Town Hall
- 2:00 PM • "A Resurrection" play by Willa Cather
- 6:00 PM • Historic Nebraska Concert by Dan Holtz

Sunday, October 15th, 2017

- 10:00 AM • Community Worship, River Inn Resort
- 11:30-1:00 • Potluck Dinner *bring food to share*
- 1:00 PM • Face Painting
- 4:00 PM • Pie or Cake & Ice Cream at Railroad Depot

Sponsored by Brownville Historical Society
Paid for by Nemaha County Visitor's Committee

Diary of a Part-time Housewife

Merri Johnson

It's October!! My favorite month, for a number of reasons.

Number One: It's my birthday month, the 13th to be precise. This year it's a Friday. I can't afford to be superstitious with a birthday that falls on Friday the 13th approximately every seven years.

Number Two: The weather is fantastic. Humidity is banished (usually). Indian Summer arrives after the first frost, so we get warm days with no biting insects! And you can't beat sleeping on chilly nights with the windows open, snuggling with your honey under a warm blanket.

Number Three: You can pull out the tomato plants and cucumber vines – even though they may still be bearing some fruit – without guilt.

Number Four: Some years, Rosh Hashanah, the Jewish New Year, falls in October. (The date varies, as do the dates of Ash Wednesday and Easter.)

This year, Rosh Hashanah occurs in September. In fact, I'm writing this on the day that Rosh Hashanah actually begins at sundown, September 20. It concludes at sundown on Friday, September 22, which coincidentally is the date of the Autumnal Equinox. What a great combination of two events this year.

I'm not Jewish, so I don't actually observe Rosh Hashanah, but I find it enriching to my Christian faith to have some level of familiarity with the Jewish roots all Christians share. For me, it's the year 2017; but on the Jewish calendar it's now the year 5778.

I found a couple of poems about Rosh Hashanah that reflect the changing seasons. I hope you will take a few moments to contemplate the New Year happening now, rather than on January 1.

The late year – By Marge Piercy

I like Rosh Hashonah late,
when the leaves are half burnt
umber and scarlet, when sunset
marks the horizon with slow fire
and the black silhouettes
of migrating birds perch
on the wires davening.

I like Rosh Hashonah late
when all living are counting
their days toward death
or sleep or the putting by
of what will sustain them—
when the cold whose tendrils
translucent as a jellyfish

The New Year– By Emma Lazarus

Not while the snow-shroud round dead earth is rolled,
And naked branches point to frozen skies.—
When orchards burn their lamps of fiery gold,
The grape glows like a jewel, and the corn
A sea of beauty and abundance lies,
Then the new year is born.

Look where the mother of the months uplifts
In the green clearness of the unsunned West
Her ivory horn of plenty, dropping gifts,
Cool, harvest-feeding dews, fine-winnowed light;
Tired labor with fruition, joy and rest
Profusely to requite.

HOMETOWN

BRAND CENTER SM

HOMETOWN BRAND APPLIANCES

GE • Hotpoint • Whirlpool • Maytag
SALES, SERVICE, & PARTS

(402) 274-5512

1011 CENTRAL AVENUE
AUBURN, NEBRASKA 68305

PEGGY KUSER

Certified Public Accountant
pkuse@windstream.net

916 Central Avenue
Auburn, NE 68305

(402) 274-5106 Fax: (402) 274-2580

THE HAIR COTTAGE

Shelly Nichols -For All Your Family
Peru, Nebraska Hair Care Needs
402-872-3107 -Tanning
-Manicures

Hours:
Tuesday - Friday 9-5; Sat. 8-12:00
After hours by appointment only
Walk-ins welcome

Shop At The Best Used Clothing Store

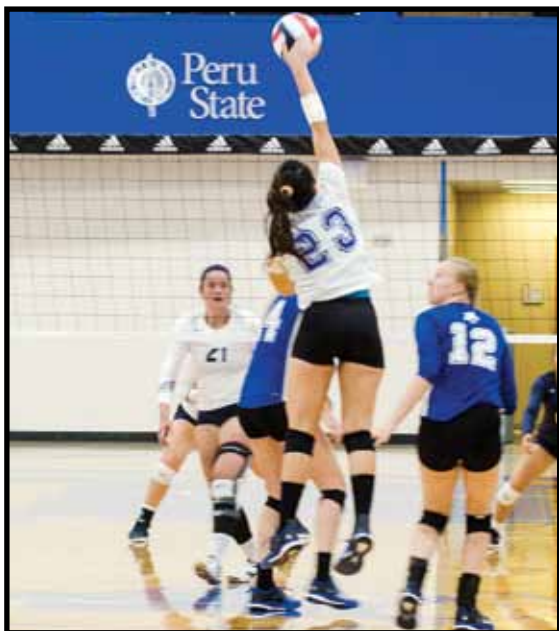


Neighborhood Closet's Location is;
911 Central Ave. in Auburn

Tue, Wed, Thu, Fri, 9 a.m. to 5 p.m. Sat 10 a.m. to 2 p.m.



More Bobcat Action



This Halloween Watch Out For Trick-or-Treaters



Drive Safely!

A Message from all of us at
STRIGGOW'S SOUTHSIDE BODY SHOP INC.

All Makes & Models

- Collision Work • Body Work
- Frame Repair • Welding
- Glass Installation



Open 8:00 AM - 5:30 PM Monday - Friday
(402) 274-3614 2000 N St., Auburn, Nebraska

OREGON TERRACE APARTMENTS



This institution is an equal opportunity provider and employer.



7th & Oregon Streets in Peru, Nebraska

1 Bedroom Apartment Utilities Included

- Affordable quality living
- Rent based on income
- Applications will be placed on waiting lists
- No pets
- Handicap accessible

This Institution is an Equal Opportunity Provider and Employer

For Applications Call Lydia at 402-274-5460

CRESTVIEW SQUARE APARTMENTS

2 & 3 BEDROOM APARTMENTS AVAILABLE

Electric stove, refrigerator and garbage disposal
Water, sewer, garbage removal, lawn care and
snow removal furnished

Laundry Facility On Site

Tenant pays for electricity, gas, TV cable and phone

Apartments have central air and heat

Located close to shopping center

Rent based on gross income and family size

Rental assistance available for qualified applicants

For Applications



Call Lydia at 402-274-5460





Norma's Antique Mall, LLC
1715 Stone Street
Falls City, NE 68355

Norma Brittell
Owner

Norma's Antique Mall, LLC
Fine Quality Antiques & Collectibles

402-245-4338

Facebook At Normasantiquemall



Nebraska City Pioneers High School Marching Band

HEARTHSIDE COUNTRY STORE
2 MILES NORTH OF SABETHA, KANSAS ON HWY 75



BULK FOODS KITCHENWARE

Hours: Mon. - Sat. 8:00 a.m. - 5:30 p.m.

BEVERLY GOODMAN
Manager

Phone & Fax: (785) 284-0303
E-mail: hearthside2494@alltel.net
www.hearthsidecountrystore.com

2494 200th Road
Sabetha, Kansas 66534

Follow us on facebook



Nebraska City Middle School

THE CLEANERS
Professional Dry Cleaning



4 more locations to serve you!

- Nebraska City - Brown's Shoe Fit
- Falls City - Brown's Shoe Fit
- Seneca - Seneca Variety
- Sabetha - Main Street Auto

Pickup and delivery to these locations each Monday & Thursday.

402-274-3213
809 Central Ave, Auburn, Nebraska



Blair; always a good look and a good sound.

Knowing our clients personally is what we do.



Terri Bishop
Financial Advisor
1310 Courthouse Avenue
Auburn, NE 68305
402-274-5003
www.edwardjones.com

Edward Jones
MAKING SENSE OF INVESTING

Member SIPC

Alzheimer's Affects Us All



Resilience: The Successful Caregiver's Secret Weapon

By Lee Nyberg

Resilience is a combination of confidence, humility, hopefulness, positivity, adaptability, self-control, and problem-solving ability. Sound like a tall order for Superman or Wonder Woman, let alone ordinary mortals? Anyone who has raised teenagers or learned to play golf has used resilience.

Fortunately, you're more resilient than you think, according to the American Psychological Association (APA), and you can build more resilience using these recommendations from the APA.

Maintain good relationships with people who care about you and will offer help and support, such as family and friends.

Accept change as a natural part of life. Accept what you can't change (a diagnosis of dementia for your loved one) and work to change what you can (healthy eating for you and your loved).

Approach a crisis with the idea of facing it one step at a time rather than as an insurmountable problem. Recognize even your smallest forward movement. (Today, I spoke with someone at the Alzheimer's Association about my father.)

Move toward goals with decisive action. (I bought a space heater for the bathroom so Dad's showers are more comfortable and easier.)

Nurture a positive self-view. Acknowledge you are learning and growing in caregiving skills and problem-solving. (I understand so much more about Alzheimer's. Mom's behavior is not her fault, but her disease. She's still my parent and deserves respectful treatment.)

Maintain perspective and a hopeful outlook about challenging situations. Caregiving will change over the course of your loved one's life. Being grateful for simple things can help you stay positive. (Does it really matter if my husband doesn't eat all his dinner? I am grateful I have discovered recipes for more nutritious versions of his favorites.)

Encourage an optimistic view instead of focusing on fearful thoughts. Believing good will happen in your life and visualizing what you want can keep you out of the quicksand of self-pity. (I am willing to try adult day services to get a break from caregiving instead of believing Mom will be too resistant to allow me to have some time for myself.)

Care for your own mental and physical health. Resilient people know it gives them stamina and helps them handle difficulties and emotional situations. They believe getting help is okay.

Resilience is a toolkit of survival skills. Call on these skills in your daily caregiving journey. Remember back to challenging times and consider how you handled strong emotions, the value of rest when stressed, who you called for help, and how you bolstered self-confidence and strength. Every endeavor, and especially caregiving will be more successful when you incorporate confidence, humility, perspective and a hopeful, positive and problem-solving oriented approach. Have a future in mind for yourself beyond caregiving and recognize the importance of taking care of your self in the present.

Lee Nyberg seeks to help families and those living with Alzheimer's through education and her company, Home Care Assistance. For more information visit our website: www.HomeCareAssistanceOmaha.com.



BOBCAT FOOTBALL

2017-18 SEASON



AVILA UNIVERSITY August 26 1PM Peru State College <i>Swenson Presentation</i>	CENTRAL METHODIST UNIVERSITY September 2 6PM Peru State College <i>Winter/Spring Athlete Recognition</i>	EVANGEL UNIVERSITY September 9 6PM Springfield, Mo	MISSOURI VALLEY COLLEGE September 16 11AM Marshall, Mo <i>ESPN 3 TV Game</i>	MIDAMERICA NAZARENE UNIVERSITY September 23 1PM Peru State College <i>Hall of Fame Game</i>	BAKER UNIVERSITY September 30 1PM Baldwin City, KS	GRAND VIEW UNIVERSITY October 14 1PM Des Moines, IA
	WILLIAM PENN UNIVERSITY October 21 11AM Peru State College <i>ESPN 3 TV Game</i>	GRACELAND UNIVERSITY October 28 2PM Peru State College <i>Homecoming</i>	CULVER-STOCKTON COLLEGE November 4 1PM Canton, MO	BENEDICTINE COLLEGE November 11 1PM Peru State College <i>Senior Day</i>		

Nebraska's First College • Established in 1867 • Peru, Nebraska • 1-800-742-4412 • Member Institution of the Nebraska State College System • Accredited by the Higher Learning Commission since 1915
 Accredited by the National Council for Accreditation of Teacher Education (NCATE)

Valentino's®

The Best Pizza Ever Made - Guaranteed!



Purchase Gift Cards Totaling \$50, and Receive a \$5 Gift Card Free!



Valentino's of Nebraska City
 1710 South 11th Street
 Nebraska City, NE 68410
 (402) 873-5522

Stop in and have your fill of
The Grand Italian Buffet!
 Includes Pizza, Salad & Dessert

\$1 off Grand Italian Buffet; Limit 6/coupon
 Good Through November 30, 2017



Redeemable Only at Valentino's in Nebraska City.
 (402) 873-5522 1710 South 11th Nebraska City, NE68410

\$1 off Grand Italian Buffet; Limit 6/coupon

PLUS
 Buy any pizza and
 get a frozen pizza
 'to go' for half price!

Midwest Honey

Nice quality, great flavor, light clover/alfalfa mix. Pick up in Auburn, NE or we can ship. Prices below are FOB Auburn. Bee pollen also available. Call for pricing.

1 1/2 lb. bear -----	\$ 6.50
5 lb. jug -----	\$ 19.00
1 gallon jug (12.8#) -----	\$ 44.00
5 gallon jug (60#) -----	\$172.00

Phone: 402-274-3725